



Braidwood Ops

Your Potential Unleashed at a Great Place to Work

Initial License Training

Information Session

Tom McCool

Braidwood Operations Director

February, 2009



Value of Holding an Operating License at Exelon

- 1. Requirement for multiple key manager level positions*
- 2. Carries the weight of a 4-year degree @ Exelon*
- 3. Proves your technical competency in Nuclear*
- 4. Indicates your potential for future positions in the organization based upon your ability to learn*

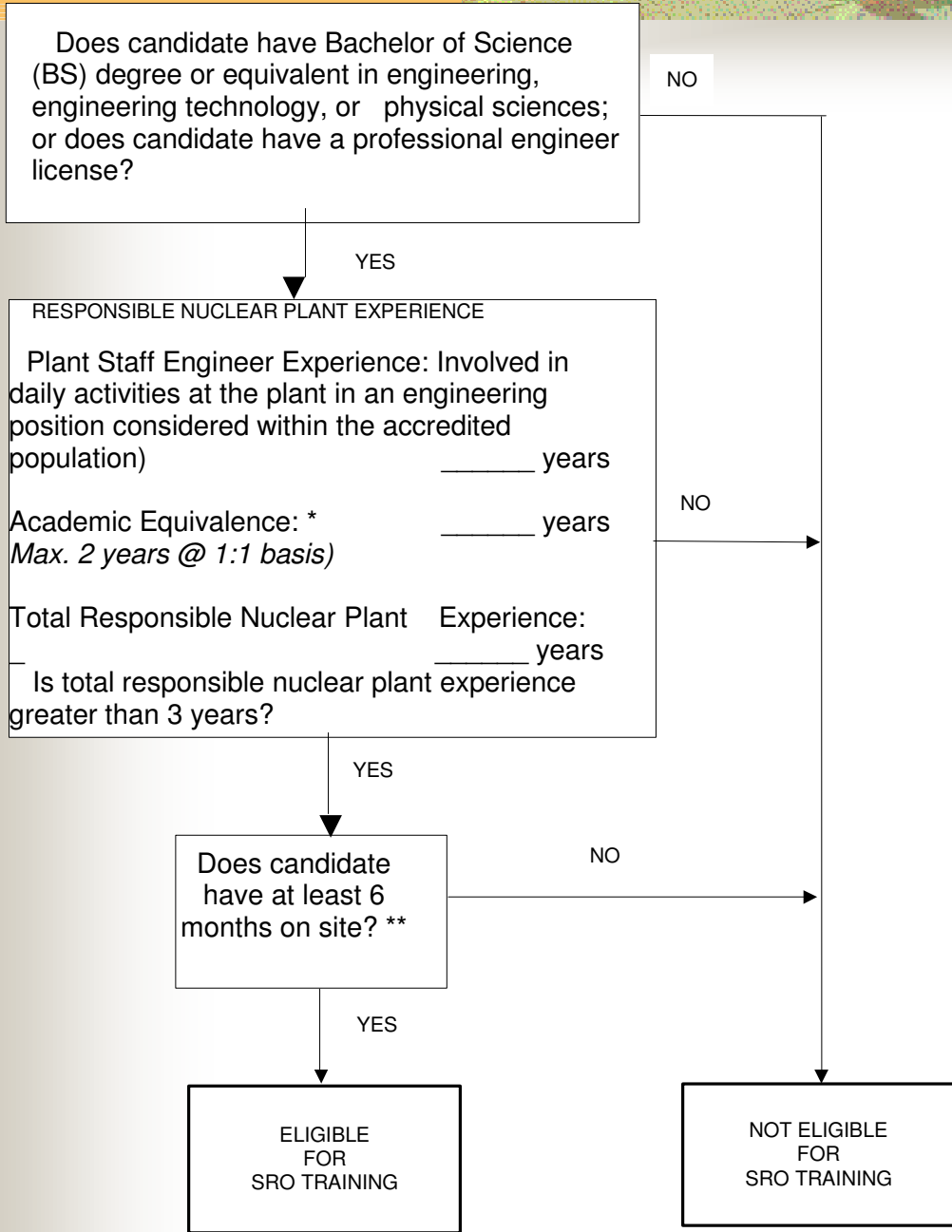


SRO Requirements

- *High School Diploma with some technical experience*
- *Minimum of 6 months on site*
- *3 years of Nuclear Experience*
- *Engineering Degree or Equivalent Technical Degree if filling STA Role*

Direct SRO

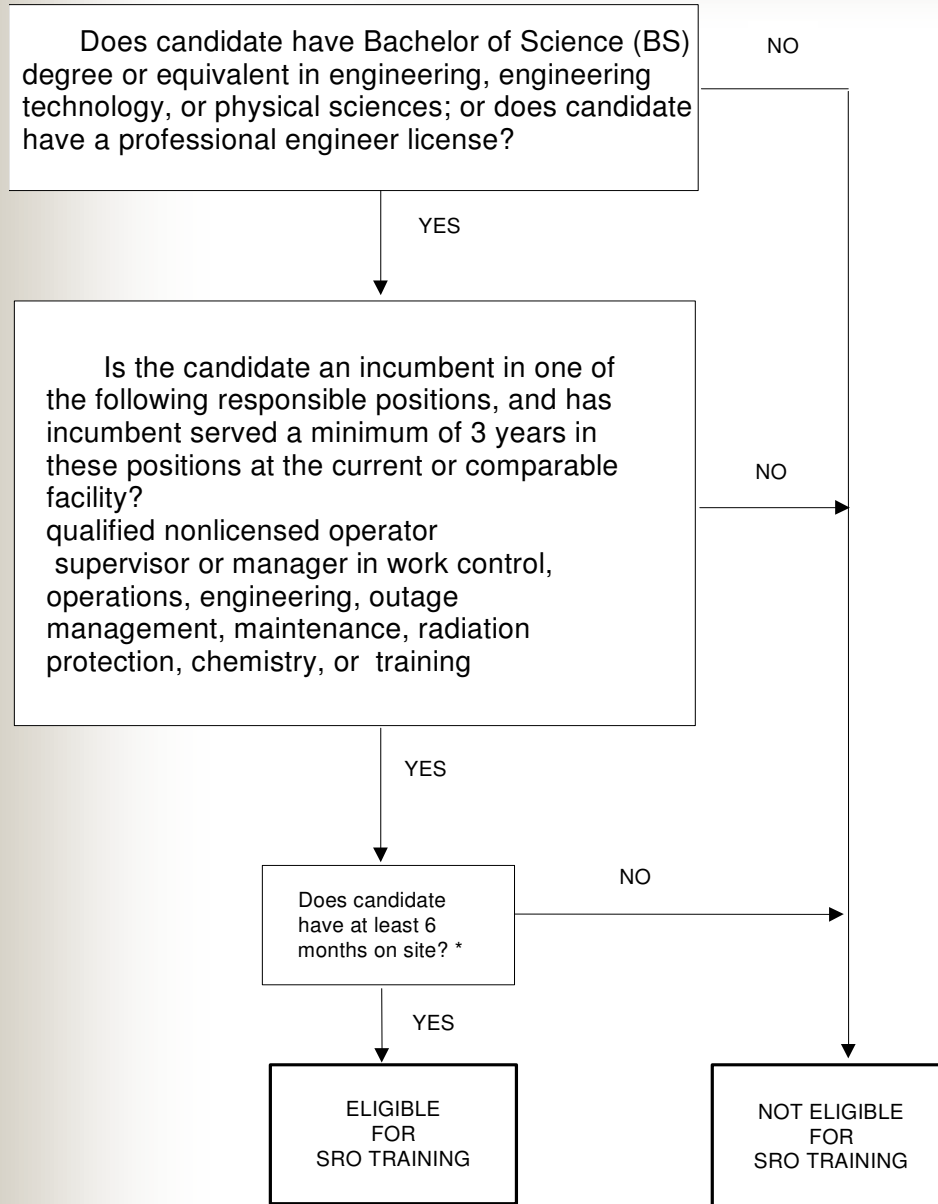
Degreed Plant Staff Engineer



* Academic Equivalence
Academic training may be considered equivalent to "Responsible Nuclear Plant Experience" on a one-for-one basis up to a maximum of two years for the "Degreed Plant Staff Engineer Direct SRO." This training must be comprised of successfully completed college-level course work leading to a recognized degree in engineering, engineering technology, or the physical sciences.

** 6 Months on Site
The six months on site time requirement may be fulfilled by working in a technical capacity in any station department including the Training Department as an instructor, supervisor or manager. Time on site credited toward meeting overall experience requirements may concurrently be credited for the six months on site time requirement. Time spent as a student in a training program cannot be credited toward the six month on site time period.

**Direct SRO
Degreed Managers or Degreed Non-licensed Operators**



*** 6 Months on Site**
The six months on site time requirement may be fulfilled by working in a technical capacity in any station department including the Training Department as an instructor, supervisor or manager. Time on site credited toward meeting overall experience requirements may concurrently be credited for the six months on site time requirement. Time spent as a student in a training program cannot be credited toward the six month on site time period.



Length of ILT Program

The over-all length of the ILT program differs from site to site. And, the various course components also differ in length as indicated in the chart below. A course re-design is in progress for the fleet which will likely change the chart below.

Station	GF	Systems	Sim & OJT	Cert & NRC Exam	Total Weeks
BRW	15	20	38	7	80
BYR	17	17	36	9	79
CPS	9	17	37	7	70
DRE	11	16	36	6	69
LAS	9	14	43	6	72
LIM	5	14	40	6	65
OC	11	14	40	7	72
PB	5	23	35	7	70
QC	10	20	39	8	77
TMI	10	13	43	8	74
Average	10.2	16.8	38.7	7.1	73.7



Typical 12 hour shift schedule:

Tuesday through Friday Training Week: 32 hours

Monday through Thursday Day shift 0700 to 1900: 48 hours

Tuesday through Thursday Night Shift: 36 hours

Friday through Monday Night Shift: 48 hours

Friday through Sunday Day shift: 36 hours

Tuesday through Friday Training/Extra: 32 hours

Typical crew:

Shift Manager

Unit 1 US

Unit 2 US

WEC/STA

Field Supervisor

4 NSO

8 EO

(30 SRO, 25 NSO, 50 EO's)

Support and Services Groups

Total OPS Department is 129 personnel, 135 in Fall 2009



Monetary Benefits to License Holders

- *Minimum Target Base Pay is market competitive & analyzed & adjusted annually*
- *Upon entrance into the ILT class: 2/3 of the license premium is paid*
- *Full premium for Active SRO Standing Shift*
- *3 License class milestone payouts for Fundamentals, Simulator Certification, & achievement of SRO status*
- *Annual 2-tier SRO Re-qual Bonus for 90%, & 80% test score on first attempt*



Personal Benefits to License Holders

- 1. Gain in-depth knowledge of plant systems*
- 2. Highly respected position at every station*
- 3. Leading role at the station*
- 4. Sets the tone for the conduct of work at the station*
- 5. Very challenging and rewarding*
- 6. Improves your potential for career advancement*



Questions?